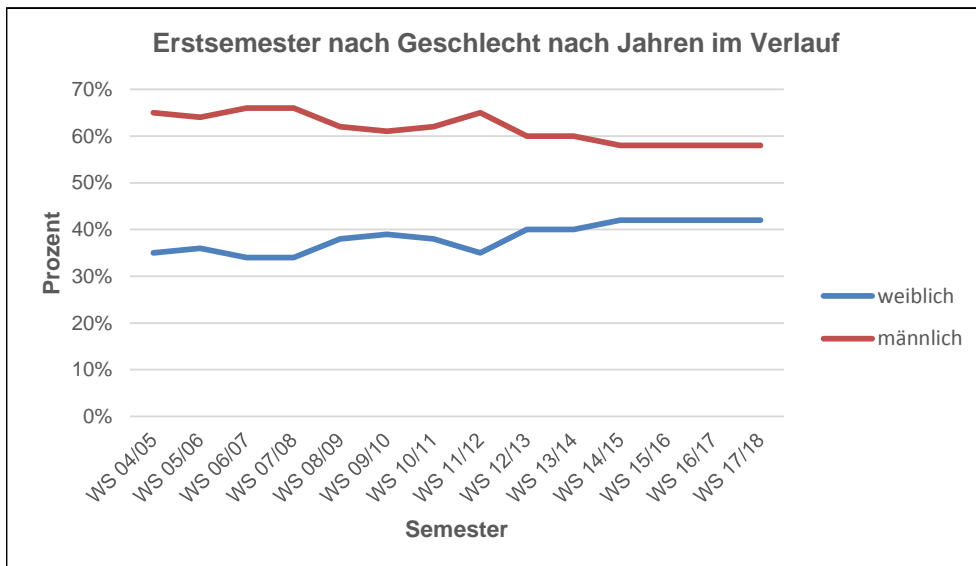


Erstsemester nach Jahren

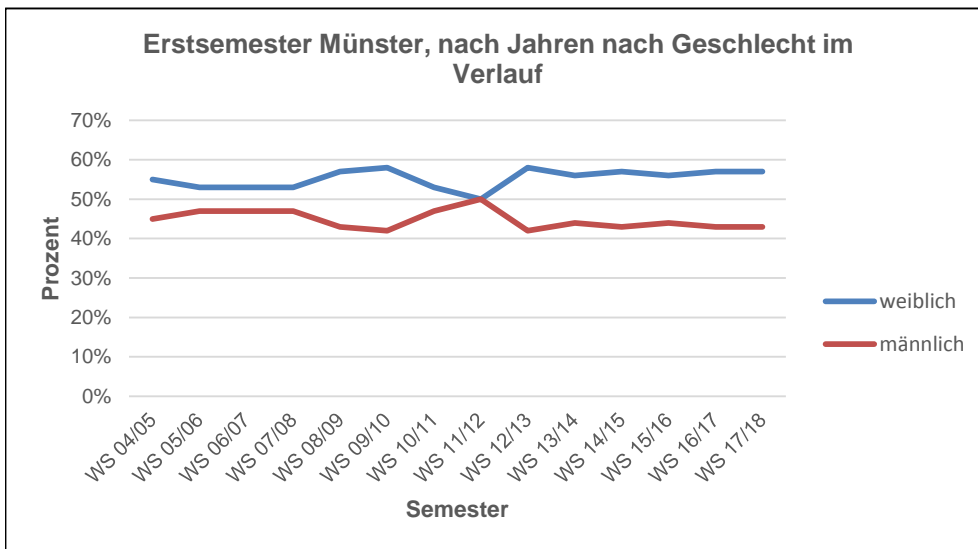
Semester	gesamt	weiblich	%	männlich	%
WS 01/02	1.496	547	36,6%	949	63,4%
WS 02/03	1.658	594	35,8%	1.064	64,2%
WS 03/04	1.806	595	32,9%	1.211	67,1%
WS 04/05	1.616	566	35,0%	1.050	65,0%
WS 05/06	1.673	600	35,9%	1.073	64,1%
WS 06/07	1.696	576	34,0%	1.120	66,0%
WS 07/08	2.146	738	34,4%	1.408	65,6%
WS 08/09	2.044	784	38,4%	1.260	61,6%
WS 09/10	2.356	915	38,8%	1.441	61,2%
WS 10/11	2.375	909	38,3%	1.466	61,7%
WS 11/12	3.264	1.147	35,1%	2.117	64,9%
WS 12/13	2.983	1.187	39,8%	1.796	60,2%
WS 13/14	3.168	1.284	40,5%	1.884	59,5%
WS 14/15	3.191	1.332	41,7%	1.859	58,3%
WS 15/16	3.417	1.435	42,0%	1.982	58,0%
WS 16/17	3.408	1.449	42,5%	1.959	57,5%
WS 17/18	3.445	1.458	42,3%	1.987	57,7%



Erstsemester nach Jahren nach Standorten

Münster

Semester	gesamt	weiblich	%	männlich	%
WS 04/05	841	461	54,8%	380	45,2%
WS 05/06	953	502	52,7%	451	47,3%
WS 06/07	871	459	52,7%	412	47,3%
WS 07/08	1.158	614	53,0%	544	47,0%
WS 08/09	1.136	651	57,3%	485	42,7%
WS 09/10	1.382	797	57,7%	585	42,3%
WS 10/11	1.511	794	52,5%	717	47,5%
WS 11/12	1.851	935	50,5%	916	49,5%
WS 12/13	1.684	982	58,3%	702	41,7%
WS 13/14	1.903	1.074	56,4%	829	43,6%
WS 14/15	1.975	1.125	57,0%	850	43,0%
WS 15/16	2.188	1.222	55,9%	966	44,1%
WS 16/17	2.154	1.234	57,3%	920	42,7%
WS 17/18	2.192	1.245	56,8%	947	43,2%



Erstsemester nach Jahren nach Standorten

Steinfurt

Semester	gesamt	weiblich	%	männlich	%
WS 04/05	775	105	13,5%	670	86,5%
WS 05/06	720	98	13,6%	622	86,4%
WS 06/07	825	117	14,2%	708	85,8%
WS 07/08	988	124	12,6%	864	87,4%
WS 08/09	908	133	14,6%	775	85,4%
WS 09/10	974	118	12,1%	856	87,9%
WS 10/11	864	115	13,3%	749	86,7%
WS 11/12	1.413	212	15,0%	1.201	85,0%
WS 12/13	1.299	205	15,8%	1.094	84,2%
WS 13/14	1.265	210	16,6%	1.055	83,4%
WS 14/15	1.216	207	17,0%	1.009	83,0%
WS 15/16	1.229	213	17,3%	1.016	82,7%
WS 16/17	1.254	215	17,1%	1.039	82,9%
WS 17/18	1.253	213	17,0%	1.040	83,0%

